



YOTAM OTTOLENGHI **PLENTY MORE**
2015
no time for cook



CREATE SPLASHBACK SERIES

Regency
A JELD-WEN Company

CREATE SPLASHBACK SERIES

For a home that radiates with style and personality, it has to be the Create glass splashback series.

While styles and trends ebb and flow, the elegance and theatre of high quality expansive glass is unquestionable.

Whether it's a classic period home or a contemporary urban townhouse, an experienced glassmaker is key to making a statement of class or infusing a space with life and colour. Regency's range of painted, metallic and mirrored glass has been hand selected by an international designer and style forecaster to ensure your home is always on-trend.

When it comes to selecting your splashback material, there are endless reasons to choose glass. Faster to install than tiles, less upkeep than stone composite and stronger than acrylic, Regency's Create Series can be used behind gas cooktops, never fades or stains and is remarkably easy to clean.

- Extensively curated selection of colours, mirrors and metallic styles
- Large panel sizes to achieve a seamless look
- Made to measure
- Carefully installed by our team of experts
- Can be used in bathrooms and entryways



CONTENTS

4	Design Collection
14	Natural Collection
16	Mirror Collection
18	Metallic Collection
20	Colour Collection
24	Glass Options
25	Design Consultation
26	Why Choose Regency
27	Openpay

DESIGN COLLECTION

Regency's design collection brings contemporary sensibility to the centuries old art of geometric ornamentation.

With a range of rhythmic patterns that take inspiration from the top trends in kitchen finishes and designs, the Design Collection's sleek and linear line work achieves a fresh modern feel using motifs that have, quite literally, never gone out of style.

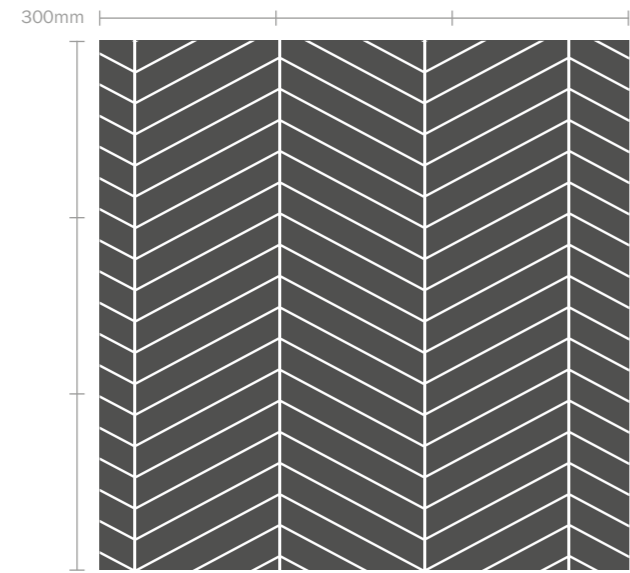
And with hand-selected colour blends and metallic options, each and every design has been chosen to both complement and enrich today's kitchen trends.

- Unique patterns hand selected by international design and style forecaster
- Deco, Arabesque, Chevron and Stretched Honeycomb styles
- Wide range of on-trend colour and metallic options
- Each design is printed on a perfectly matched glass type

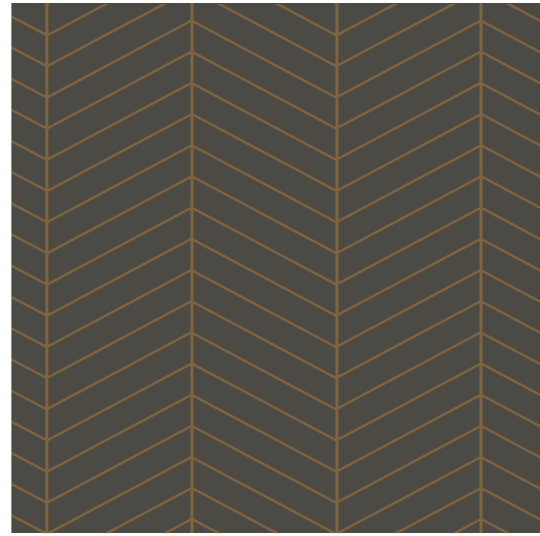
Please note: Due to the manufacturing process we cannot guarantee that designs will line up in corner configurations or joining panels. We therefore do not recommend the use of the Design Collection in these applications.



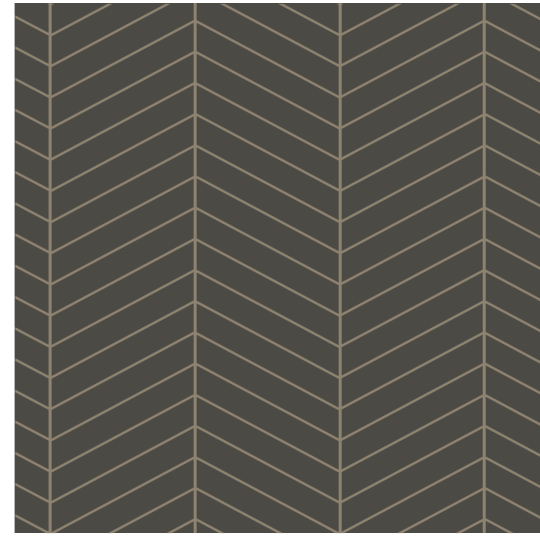
CHEVRON



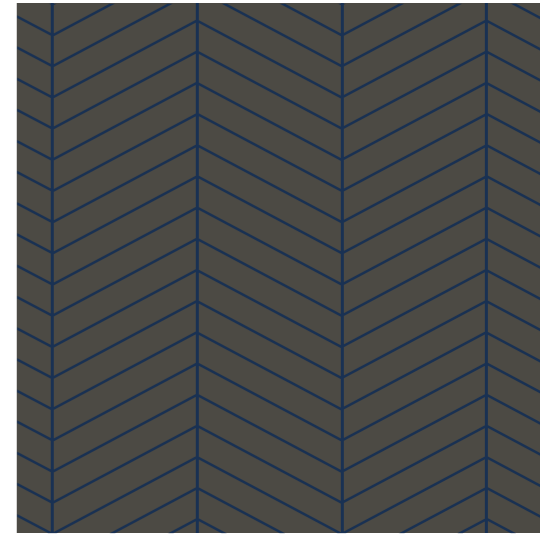
C1. Anthracite / White – Lustre Matte Glass



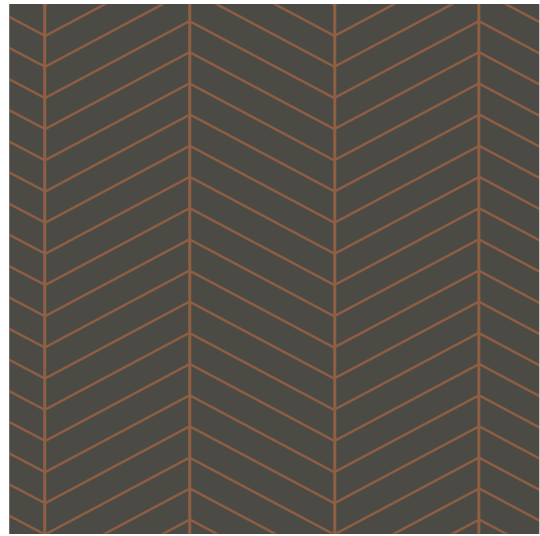
C2. Warm Grey / Pearl Gold – Lustre Matte Glass



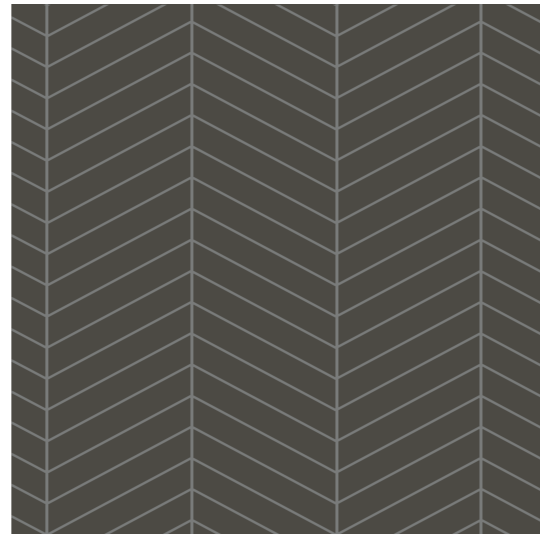
C5. Warm Grey / Pearl Beige – Lustre Matte Glass



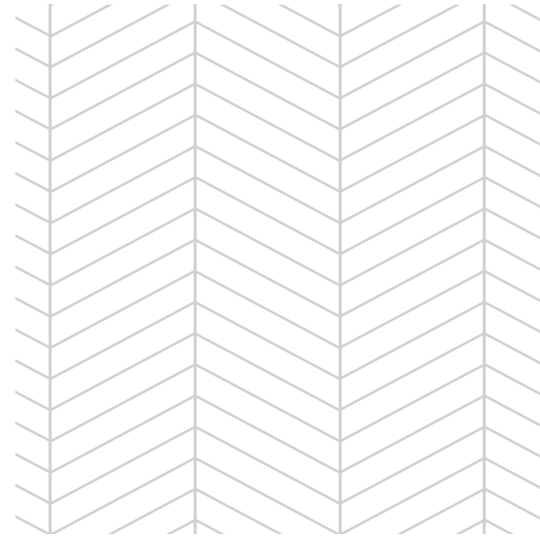
C6. Warm Grey / Cobalt Blue – Lustre Matte Glass



C3. Warm Grey / Pearl Copper – Lustre Matte Glass

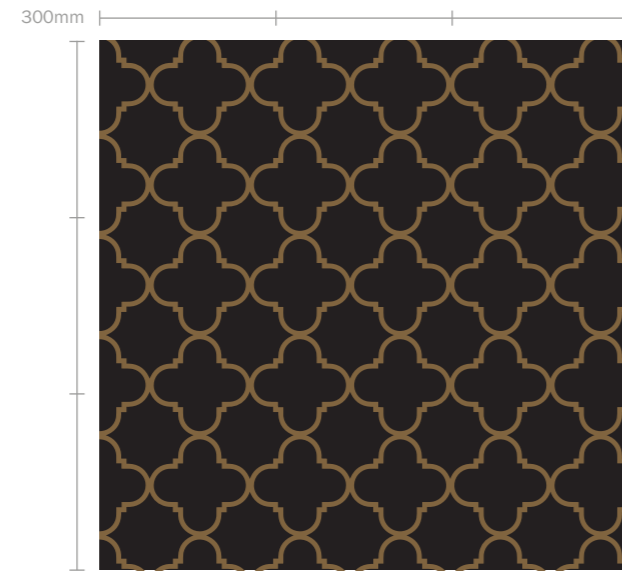


C4. Warm Grey / Pearl Dark Grey – Lustre Matte Glass



C7. White / Dusty Grey – Clarity Matte Glass

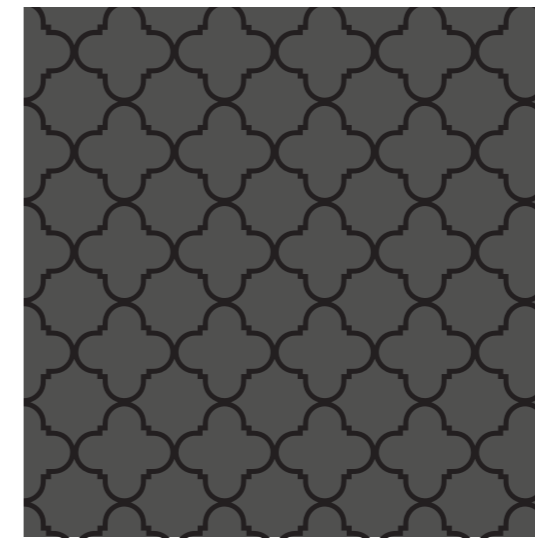
ARABESQUE



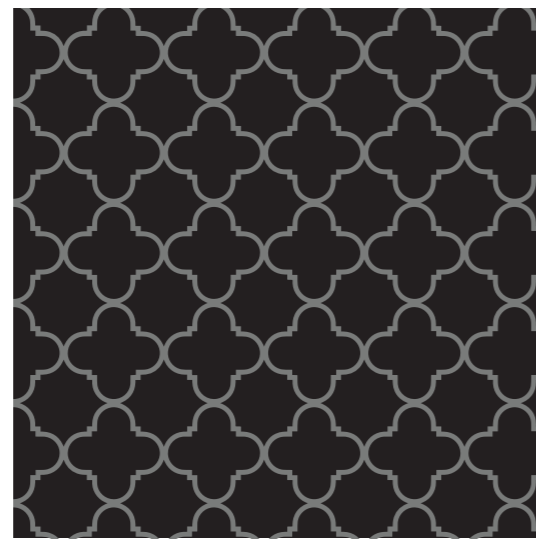
A1. Black / Pearl Gold – Lustré Matte Glass



A2. Black / Pearl Copper – Lustré Matte Glass



A5. Anthracite / Black – Lustré Matte Glass

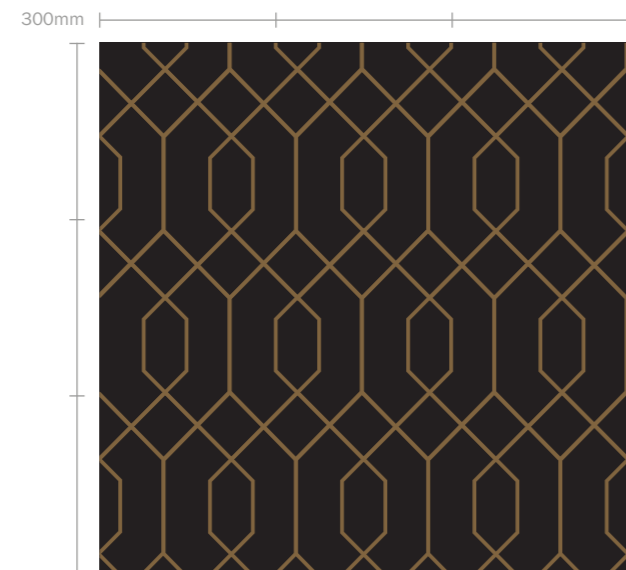


A3. Black / Pearl Dark Grey – Lustré Matte Glass



A4. Black / Pearl Beige – Lustré Matte Glass

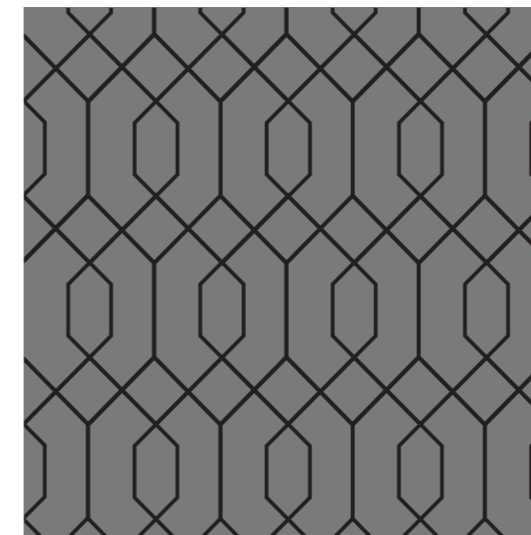
DECO



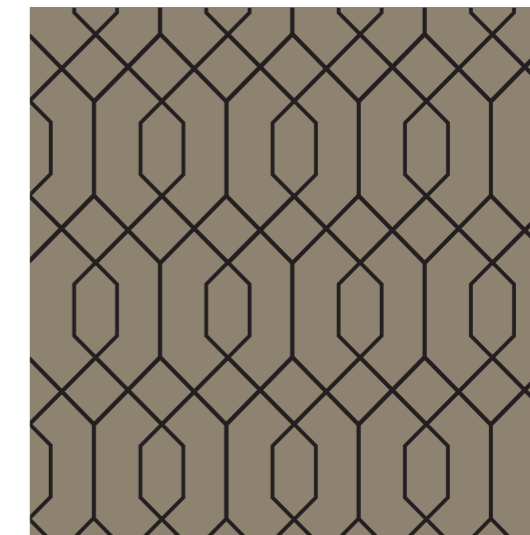
D1. Black / Pearl Gold – Clarity Gloss Glass



D2. Black / Pearl Dark Grey – Clarity Gloss Glass



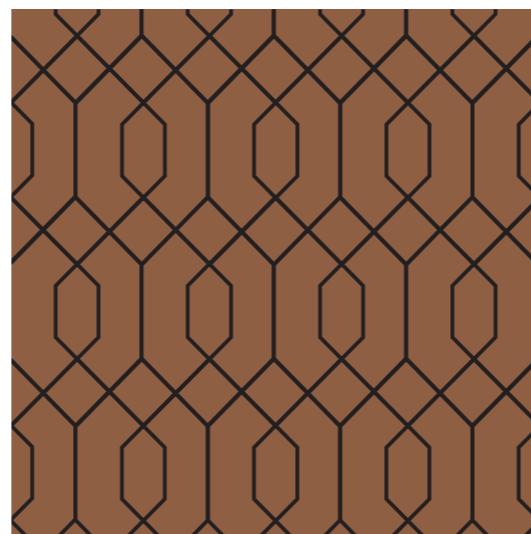
D5. Pearl Dark Grey / Black – Clarity Gloss Glass



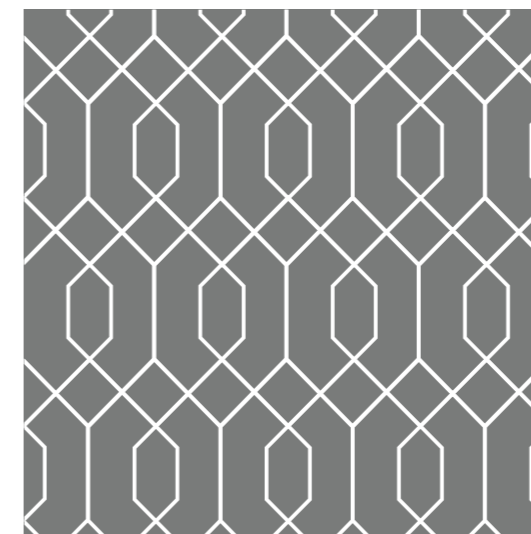
D6. Pearl Beige / Black – Clarity Gloss Glass



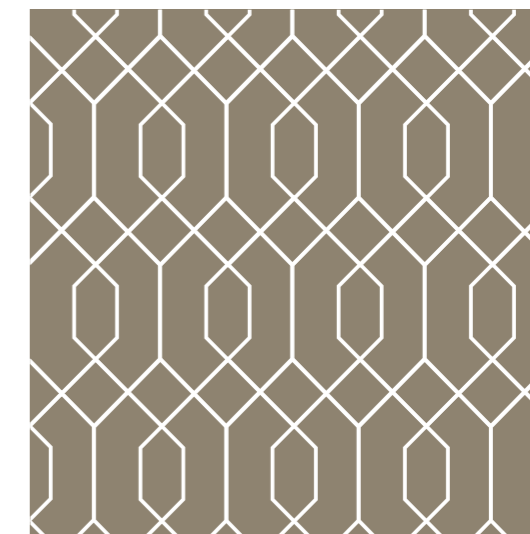
D3. Pearl Gold / Black – Clarity Gloss Glass



D4. Pearl Copper / Black – Clarity Gloss Glass

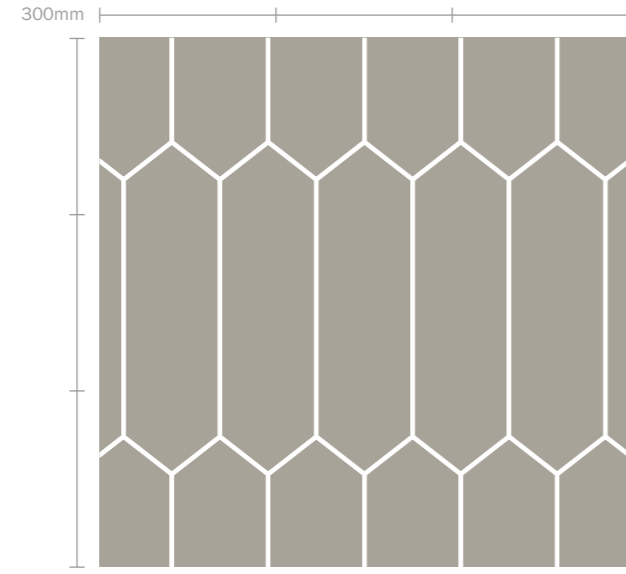


D7. Pearl Dark Grey / White – Clarity Gloss Glass

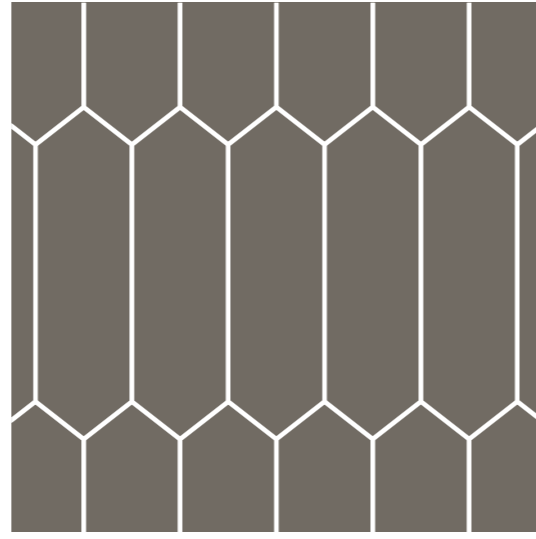


D8. Pearl Beige / White – Clarity Gloss Glass

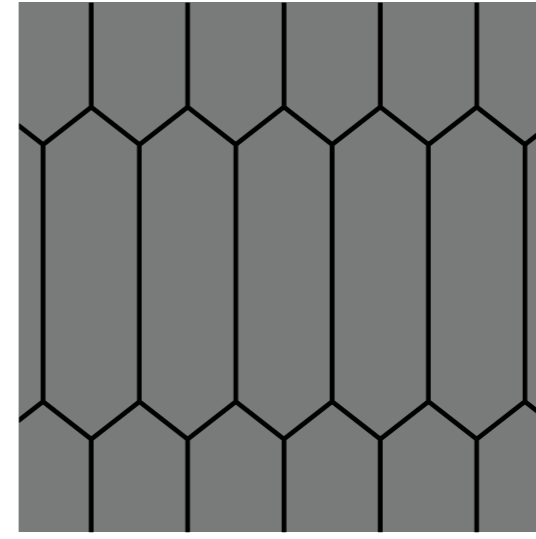
**STRETCHED
HONEYCOMB**



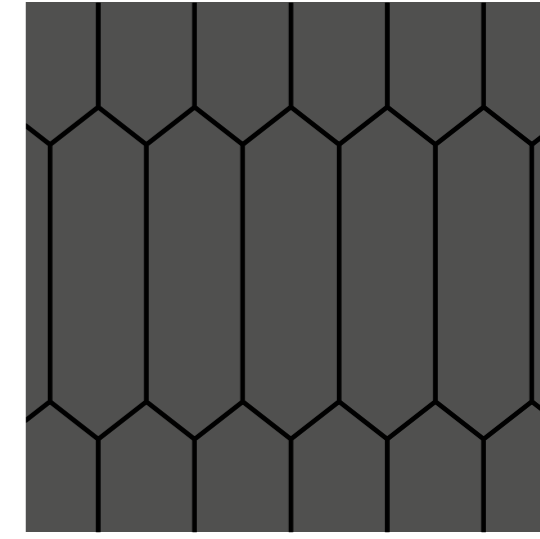
H1. Travertine / White - Clarity Matte Glass



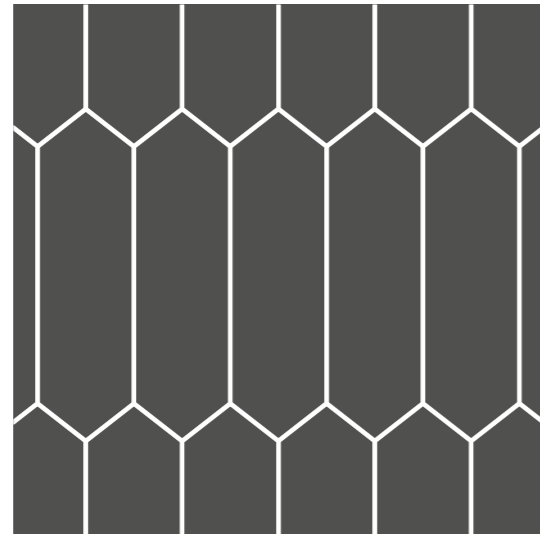
H2. Flagstone / White - Clarity Matte Glass



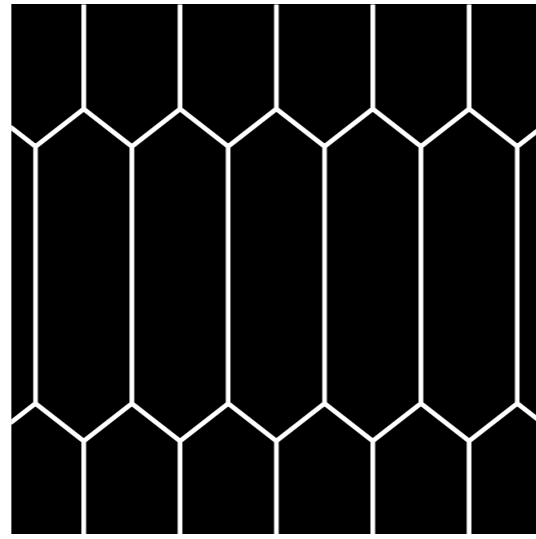
H5. Pearl Dark Grey / Black - Lustre Matte Glass



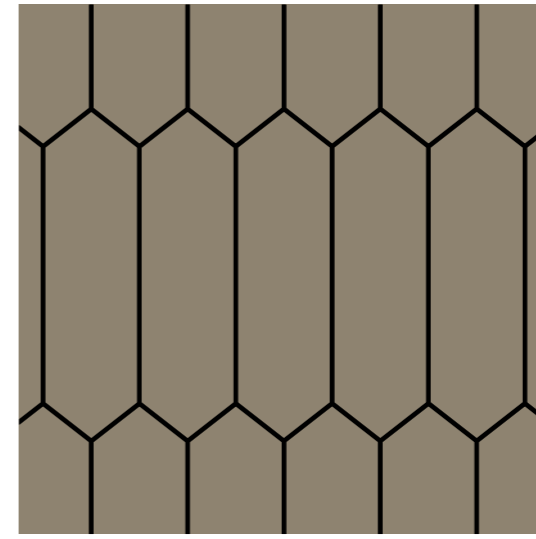
H6. Anthracite / Black - Lustre Matte Glass



H3. Anthracite / White - Clarity Matte Glass



H4. Black / White - Clarity Matte Glass



H7. Pearl Beige / Black - Lustre Matte Glass

NATURAL COLLECTION

Regency's natural collection provides the status and allure of stone and marble without the upkeep normally associated with organic materials.

The utility of natural materials has always been its strength, and the ability to combine a Natural splashback with timbers, metallic and matte finishes to modernise your kitchen is hard to look past.

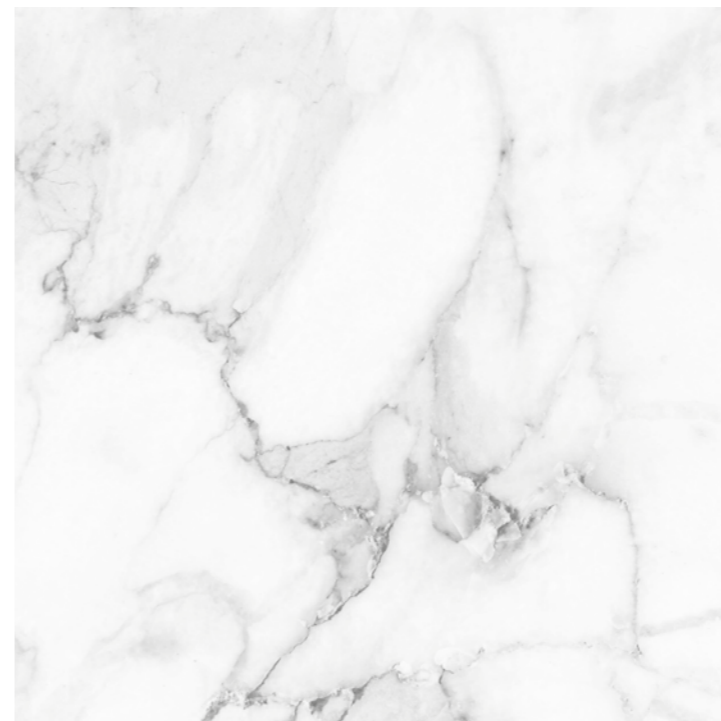
Whether you're chasing a sense of grandeur via a marble finish or the industrial accent of concrete, it can all be done without arduous installation and ongoing maintenance by opting for a stylised glass splashback from Regency.

- Mimic the look and finish of natural materials
- Glass requires less upkeep than stone and concrete
- Never fades or stains
- Simple installation and integration with any kitchen
- Each design is printed on Clarity Matte glass, providing an ultra matte finish that mimics the look of stone

Please note: Due to the manufacturing process we cannot guarantee that designs will line up in corner configurations or joining panels.



Pictured: Ma1. Marble Clarity Matte Glass



Ma1. Marble Clarity Matte Glass



Co1. Grey Cement Clarity Matte Glass

MIRROR COLLECTION

No matter the size, a Regency mirrored splashback will create a sense of spaciousness and modernity in your kitchen.

Reflect a city skyline, garden, outdoor entertainment area or beautiful views surrounding your home.

A hallmark of urban contemporary design, a mirrored splashback can instantly add an expansive feel to your kitchen. Regency even offers prestige grey and bronze mirror glass, often found only in the most exclusive locations, to all of our customers.

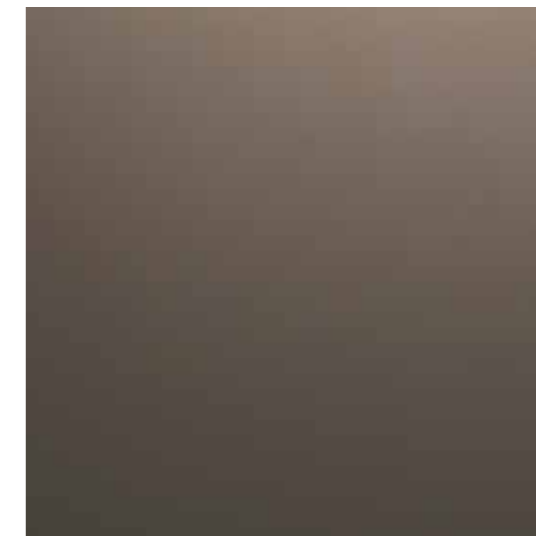
- Available in grey, silver and bronze
- Add a sense of space to your kitchen
- Reflect the outside world into your home



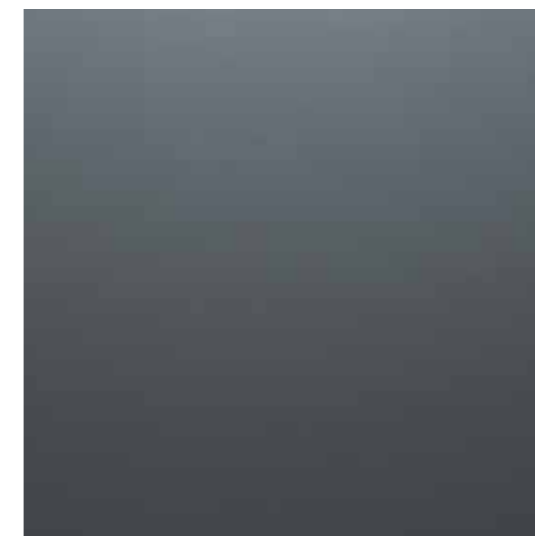
Pictured: BM. Bronze Mirror



SM. Silver Mirror



BM. Bronze Mirror



GM. Grey Mirror

METALLIC COLLECTION

The immediate impact of a Regency metallic splashback is perfect for those not content with traditional kitchen design.

Being a highly functional space, luxurious kitchen design is often overlooked, but there's no reason why your kitchen can't make as big an impact as any other part of your home.

Regency's Metallic Collection can perfectly complement your designer tapware and hardware and cleverly integrates into not only modern kitchens, but vintage and industrial fit outs.

- Make your kitchen a centrepiece
- Works with luxe, vintage or industrial kitchens
- Pairs beautifully with timbers, stones and white
- Can be used to complement tapware and hardware
- Glass finish options include Clarity Gloss or Lustre Matte Glass
- Availability of glass types can vary depending on the size and configuration of your splashback, speak with your Regency sales consultant for more details



Pictured: M4. Pearl Beige



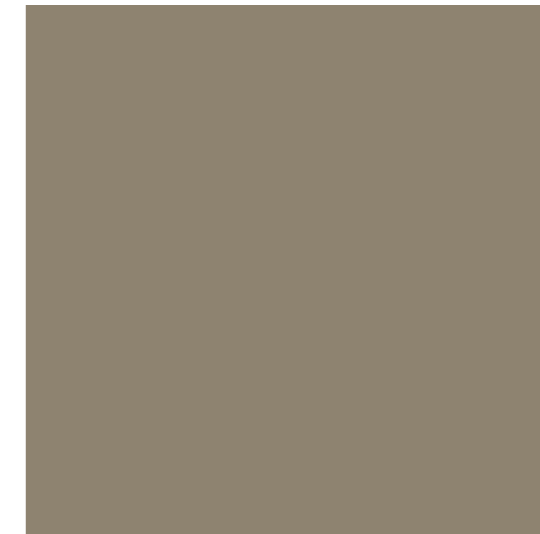
M1. Pearl Gold



M2. Pearl Dark Grey



M3. Pearl Copper



M4. Pearl Beige

COLOUR COLLECTION

Regency's incredibly extensive range makes colour glass splashbacks the most versatile option to either match or contrast with your existing kitchen elements.

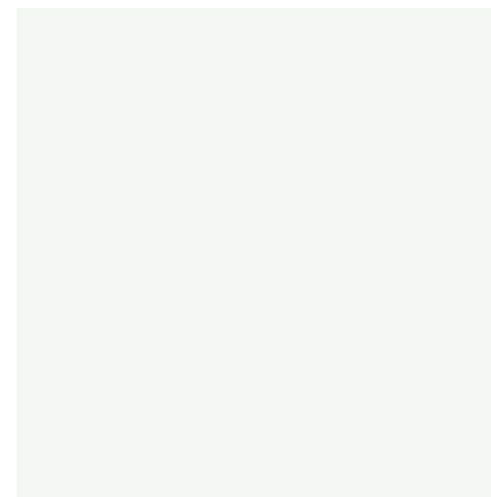
Available in vibrant high gloss or contemporary matte finishes, Colour splashbacks bring vibrancy to your kitchen by reflecting light and reducing shadows.

And with the much coveted option of Clarity Glass, there is absolutely nothing standing in the way of achieving the most vivid of colours to enliven your kitchen space.

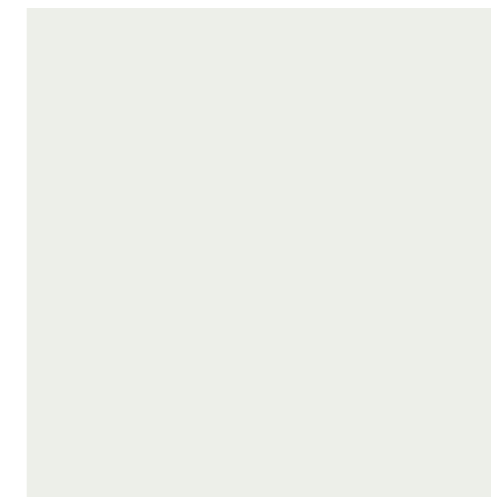
- Wide selection of colours
- A timeless option which complements all kitchen styles
- Glass finish options include Clarity Matte or Clarity Gloss. Availability of glass types can vary depending on the size and configuration of your splashback, speak with your Regency sales consultant for more details



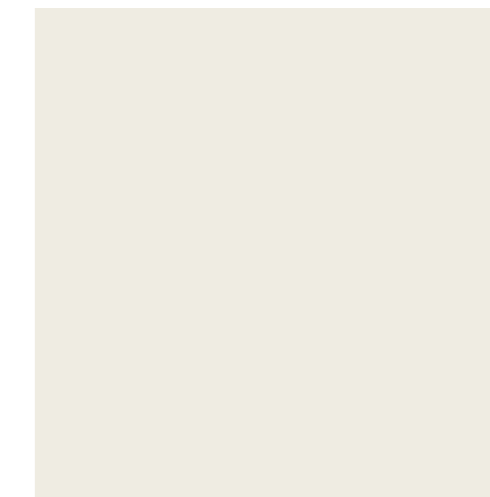
Pictured: P17. Logan Rock



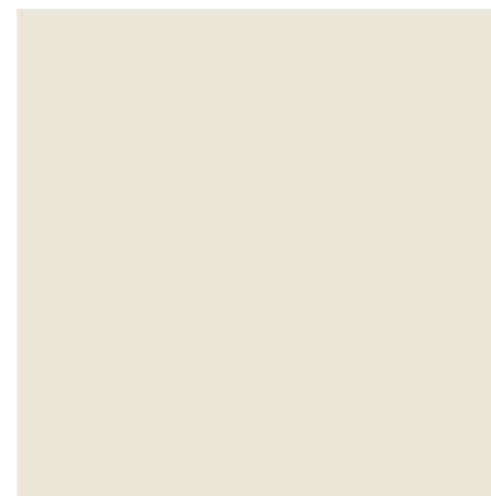
P1. Bianco Mist



P2. Mountain White



P3. China Silk



P4. Limestone



P5. Raw Ceramic



P6. Sailcloth



P7. Warm Cashmere



P8. Soft Mica



P9. Travertine



P10. Riverbed



P15. Smooth Grey



P16. Pepper



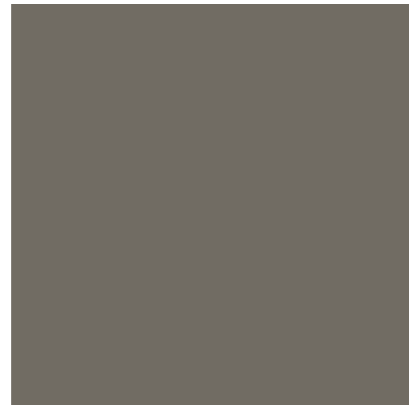
P17. Logan Rock



P18. Anthracite



P11. Shalestone



P12. Flagstone



P13. Basalt



P14. Noblestone



P19. Charcoal



P20. Black

GLASS OPTIONS

CLARITY MATTE GLASS

- Extra clear glass – ultimate clarity of colour, no green tinge
- Ultra matte finish
- Commonly known as Low Iron Acid Etch glass

CLARITY GLOSS GLASS

- Extra clear glass – ultimate clarity of colour, no green tinge
- Gloss/reflective finish
- Commonly known as Low Iron glass

LUSTRE MATTE GLASS

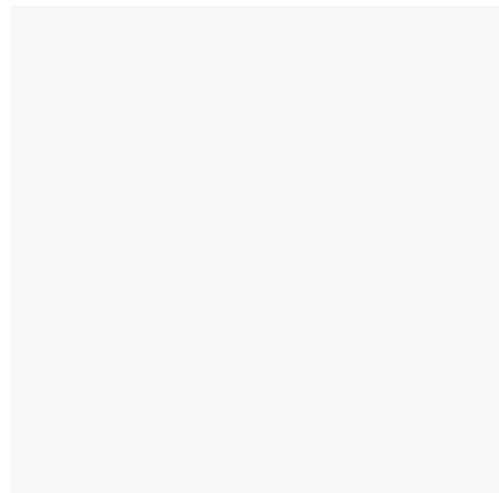
- Standard everyday glass – will show a slight 'green tinge' to colours
- Smooth matte finish

LUSTRE GLOSS GLASS

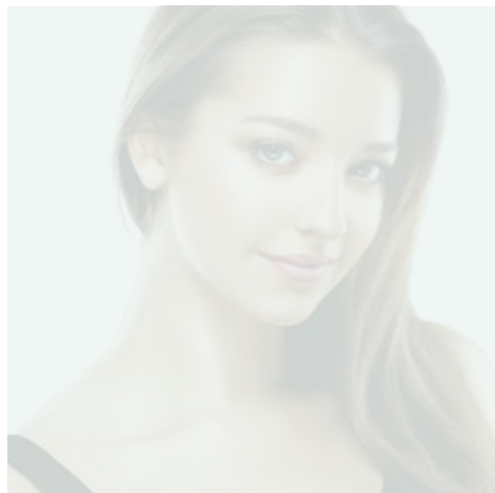
- Standard everyday glass – will show a slight 'green tinge' to colours
- Gloss/reflective finish
- Commonly known as Clear glass

NANOCLEAN PROTECTIVE COATING

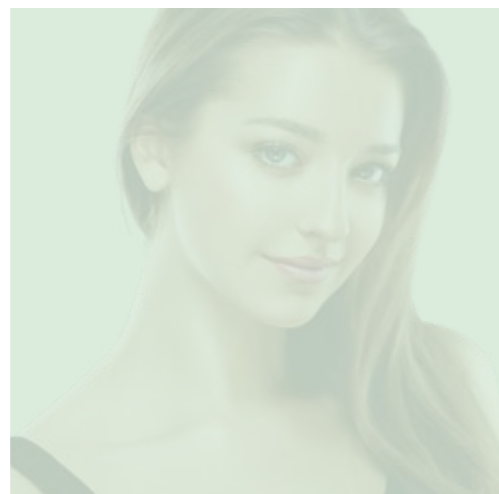
- Can be used on all glass finishes
- Repels oil and water
- Reduces cleaning time by up to 90%
- No need for harsh chemicals when cleaning – just wipe down with microfibre cloth



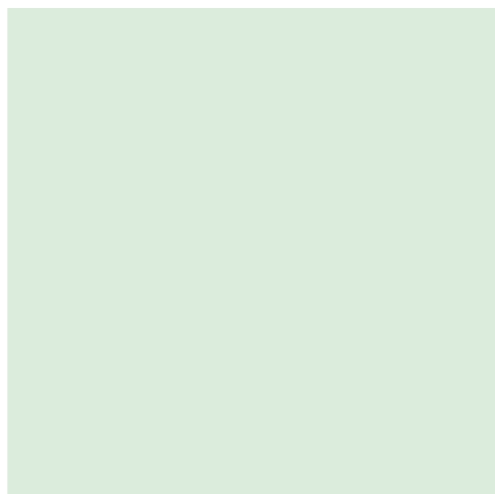
Bianco Mist on Clarity Matte Glass



Bianco Mist on Clarity Gloss Glass



Bianco Mist on Lustre Gloss Glass



Bianco Mist on Lustre Matte Glass

Please note: Availability of glass types can vary depending on the size and configuration of your splashback, speak with your Regency sales consultant for more details.

DESIGN CONSULTATION

We understand that there are many elements that come together to create a kitchen, and being the most important room of the home, we want to assist in helping you creating your perfect space.

That's why we offer a free design consultation at your home, or in our showroom, at a time that suits you.

So whether you're brimming with ideas or just lots of questions, we'll work with you to decide on the perfect splashback design to suit your kitchen.

At your appointment, your Regency consultant will:

- Discuss your needs and ideas around style and the range available
- Show you colour and glass options
- Measure your space and note any special requirements



WHY CHOOSE REGENCY

To bring your vision to life, you need experts with you every step of the way.

Regency have been Australia's experts in showerscreens, splashbacks and wardrobes for over 25 years. If you've got a dream, we'll make it a reality.

- From design consultation to installation
- Made to your exact specifications
- Durability, reliability and craftsmanship is second to none



OPENPAY WITH REGENCY

Bringing your vision to life has never been easier

Openpay lets you pay over time, without ever paying interest, via custom payment plans that you get to design yourself.

- Completely Paperless – nothing to sign
- Non-invasive process – no intrusive questions or strict criteria
- Instant decisions – approved in minutes
- Available to all permanent residents 18 years or older

Visit openpay.com.au to learn more.

openpay

TO FIND YOUR NEAREST SHOWROOM VISIT REGENCYScreens.COM.AU

OR CALL US ON 1300 737 909

We recommend checking your chosen finish against an actual sample of the product before purchasing, as varying light conditions and limitations of the printing process may affect perceived finish.

JELD-WEN Australia has used its best endeavours to ensure material is accurate at the time of printing. All information must be confirmed with your Regency Sales Consultant at the time of ordering, as specifications and details may change over time and product offerings differ from state to state. Colours displayed are a guide only and may vary from actual colours. For all product disclaimer and warranty information applicable to this catalogue and other Regency products visit regencyscreens.com.au. Regency Pty Limited ACN 085 807 790 ABN 48 085 807 790 ©REGENCY 2018. All rights reserved. JWRNAT0320/0218

Regency
A JELD-WEN Company

1300 737 909
regencyscreens.com.au